



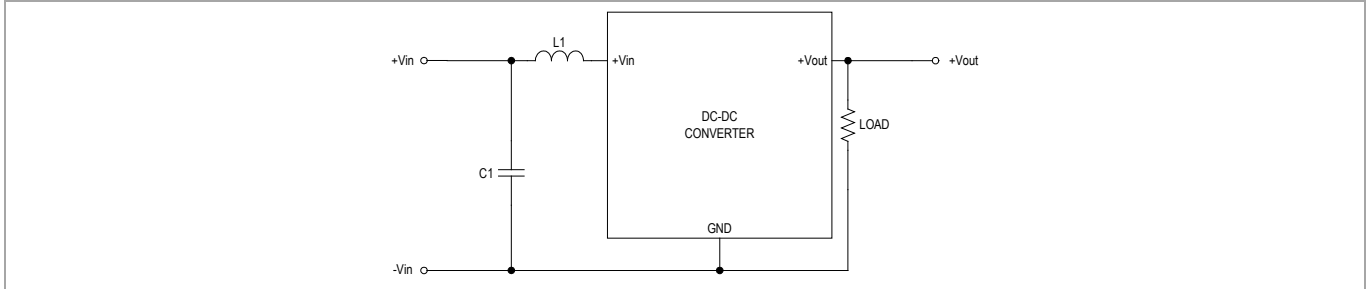
**MINMAX<sup>®</sup>**

M78AR-1 Series - EMC Notes

## M78AR-1 Series - EMC Notes

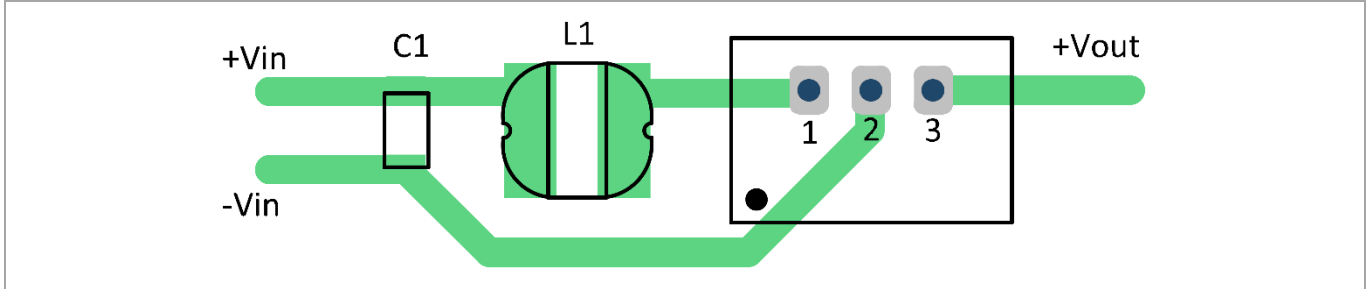
M78AR-1 Series meet EN 55022 Radiated Emissions Class A & class B without external components.

### External Filter meets Conducted EMI EN 55022, class A & class B



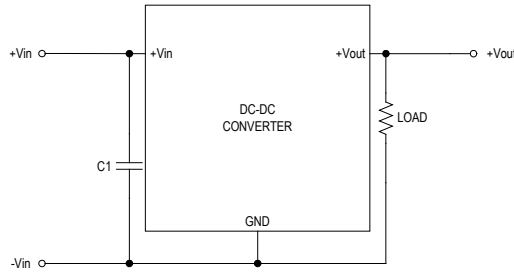
| Model          | C1                          | L1        |
|----------------|-----------------------------|-----------|
| M78AR-1 Series | 10 $\mu$ F/50V<br>1206 MLCC | 744774122 |

### Recommended PCB Layout with Input Filter



## M78AR-1 Series - EMC Notes

### External Filter meets EFT



|                |                                       |
|----------------|---------------------------------------|
| Model          | C1                                    |
| M78AR-1 Series | 22 $\mu$ F/50V<br>CHEMI-CON KY Series |

### Recommended PCB Layout with Input Filter

