



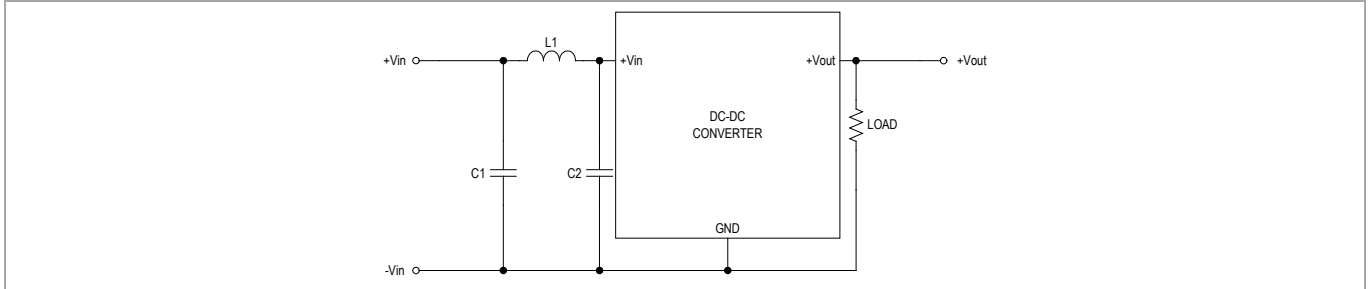
MINMAX[®]

M78SAR-0.5 Series - EMC Notes

M78SAR-0.5 Series - EMC Notes

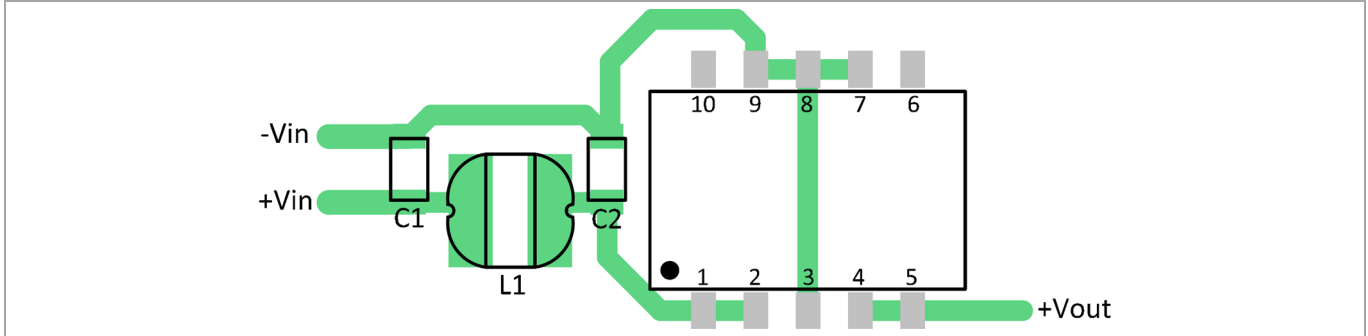
M78SAR-0.5 Series meet EN 55022 Radiated Emissions Class A without external components.

External Filter meets Conducted EMI EN 55022, class A



Model	C1	L1	C2
M78SAR-0.5 Series	4.7 μ F/50V 1206 MLCC	744774033	4.7 μ F/50V 1206 MLCC

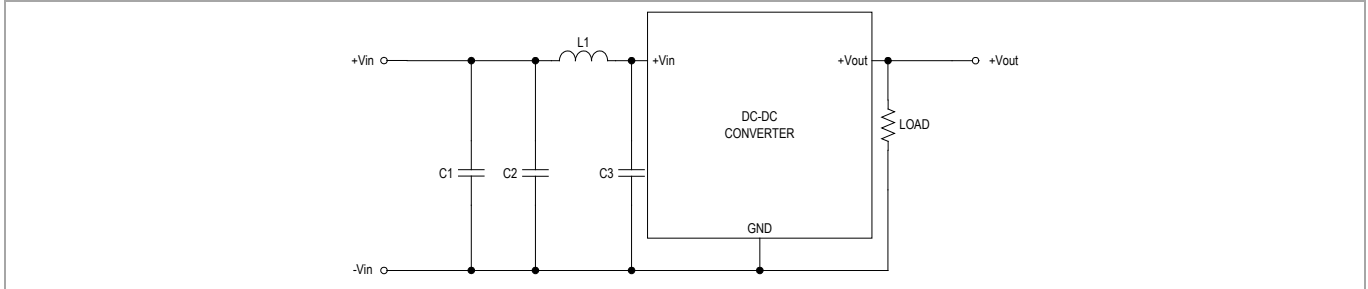
Recommended PCB Layout with Input Filter



M78SAR-0.5 Series - EMC Notes

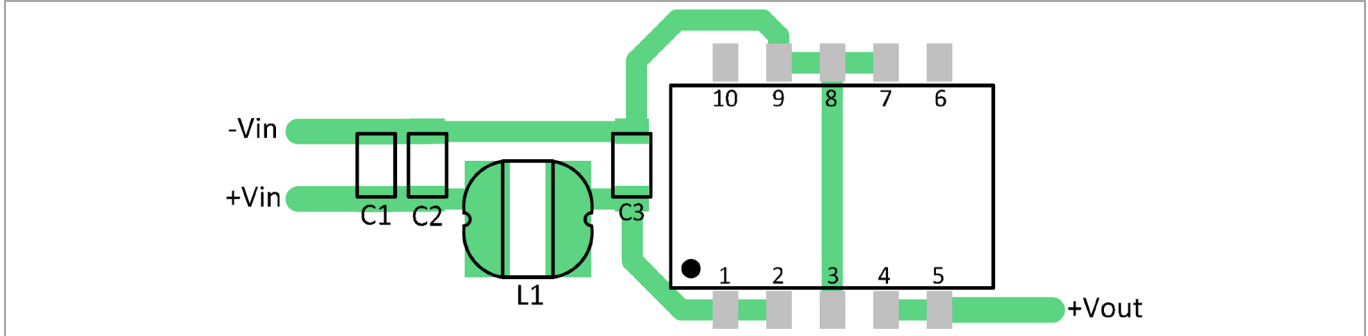
M78SAR-0.5 Series meet EN 55022 Radiated Emissions Class B without external components.

External Filter meets Conducted EMI EN 55022, class B



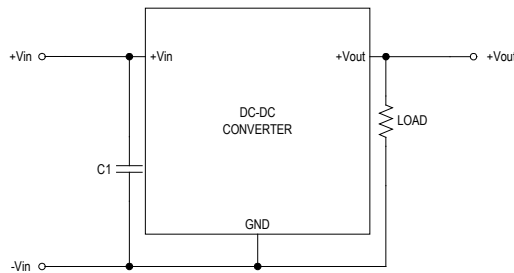
Model	C1	C2	L1	C3
M78SAR-0.5 Series	4.7 μ F/50V 1206 MLCC	4.7 μ F/50V 1206 MLCC	74477410	4.7 μ F/50V 1206 MLCC

Recommended PCB Layout with Input Filter



M78SAR-0.5 Series - EMC Notes

External Filter meets EFT



Model	C1
M78SAR-0.5 Series	22 μ F/50V CHEMI-CON KY Series

Recommended PCB Layout with Input Filter

